

Dynamic Cold Therapy Product Guide

PRODUCT OVERVIEW

DCT CHILLERS



Basic Edition Model #: DCT-SY-06-HC / DCT-SY-08-HC / DCT-SY-10-HC

- Comes in 3 sizes: 0.6, 0.8, and 1.0 Horsepower
- Ozone can be set for intervals of 0-5 minutes, activates every 15 minutes
- Display shows Flow Rate & Fault Warnings
- "Auto-Run" feature: will continue with maintaining set temperature upon restoration of power following an outage or disruption
- Optimal for users using WiFi scheduling, performs best when set to run daily in 4-6 hour intervals, once or twice a day. Can be run continuously with more frequent water maintenance. Best for use in cooler climates or temperature controlled environments.

Temperature Range:

37.4°F-108°F

Working Temperature:

34°F-113°F

Cooling Rates

0.6HP	0.8HP	1.0HP
1-3°F Every 60 Minutes	1-3°F Every 40 Minutes	1-3°F Every 20 Minutes



Standard Edition Model #: DCT-QG-10-A-06 / DCT-QG-10-A-08 / DCT-QG-10-A-10 / DCT-QG-10-A-15

- Comes in 4 sizes: 0.6, 0.8, 1.0 and 1.5 Horsepower
- Ozone can be toggled On & Off, runs in cycles of 5 minutes every 15 minutes
- Does not display Flow Rate
- WiFi enabled for remote start, but does not have scheduling feature
- Optimal for users utilizing WiFi to run unit remotely. Performs best for users operating unit 8-10 hours at a time, once or twice daily. Can be run continuously with more frequent water maintenance. Better suited for use in warmer climates.

Temperature Range:

37.4°F-107.6°F

Working Temperature:

34°F-113°F

Cooling Rates

1.5HP	1.0HP	0.8HP	0.6HP
1-3°F Every 20 Minutes	1-3°F Every 40 Minutes	1-3°F Every 60 Minutes	1-3°F Every 80 Minutes



Premier Edition Model #: DCT-SV-08D03 / SCT-SV-10D03

- Comes in 2 sizes: 0.8 and 1.0 Horsepower
- Ozone can be set for intervals of 0-3 minutes, activates every 15 minutes
- Displays Flow Rate
- Suited for users who plunge multiple times daily, or in commercial facilities (gyms, wellness centers) running on a continuous basis. Can use WiFi scheduling to optimize use

Temperature Range:

36°F-107°F

Working Temperature:

41°F-104°F

Cooling Rates

0.8HP	1.0HP
1-3°F Every 60 Minutes	1-3°F Every 40 Minutes



Dynamic Cold Therapy Product Guide

PRODUCT OVERVIEW

DCT Cold Plunge Tubs



- 0.6HP Chiller OK

Inflatable Cold Plunge Model #: DCT-IO-052 / DCT-IR-040

- 2 Shapes: Oval (52"x32") & Round (40" Diameter)
- Both versions 28" Depth
- Portable and Durable with Insulated wall construction
- Includes: Hand Pump, Cover with locking buckles, Backpack, Mat, Puncture Repair Kit, 2 Adapters for connecting Hoses
- **Oval: 85-90~ Gallons Round: 90-100~ Gallons**



42" Wide x 40" Tall

Total capacity:
140-150 Gallons

PVC Barrel Cold Plunge Model #: DCT-B-042-PLPC

- Recommended for customers within 50 miles of Coastal areas due to PVC's resistance to corrosion
- Seats 1-2 people
- PVC is easier to maintain aesthetically and cannot develop rust or corrosion
- Bench: 9" Height, 38" Width, maximum Depth 16"
- Includes: Steps, Cover with locking buckles, Plugs for Inlet & Outlet
- Barrel may be more suitable for bulky body-types
- **Recommended: 0.8HP Chiller and above**



42" Wide x 40" Tall

Total capacity:
140-150 Gallons

Stainless Steel Barrel Cold Plunge Model #: DCT-B-042SSPC / DCT-B-042-USSPC

- Comes in 304 Stainless & 316 Stainless (Ultra)
Chemicals such as chlorine and bromine can cause rusting and corrosion. Exposure to salinity in the air can cause corrosion. Not recommended in coastal regions.

- 316 Stainless recommended for commercial facilities and customers who prefer to use chemical water treatment
- Stainless Steel is aesthetically preferable to some customers, but maintaining the "polished" look can be challenging
- Bench: 9" Height, 38" Width, maximum Depth 16"
- Includes: Steps, Cover with locking buckles, Plugs for Inlet & Outlet
- **Recommended: 0.8HP Chiller and above**



32.25" Wide x 33" Tall

Total capacity:
120-150 Gallons

Cuboid Cold Plunge Model #: DCT-S-050-SS / DCT-S-055-SS / DCT-S-050-USS

- 2 sizes: 50" & 55" Length - 50" comes in both 304 and 316 Stainless Steel
- Not recommended in coastal regions due to risk of corrosion
- Same principles of Stainless Steel Barrels apply to Cuboid Models (304 vs 316)
- Wood Trim treated with water protection stain
- User sits flat on floor surface similar to traditional bathtub, no Bench inside
- Includes: Steps, Cover with locking buckles, Plugs for Inlet & Outlet
- Cuboid may be more suitable for taller users
- **Recommended: 0.8HP Chiller and above**

Dynamic Cold Therapy Product Guide

ACCESSORIES OVERVIEW

CHILLER PARTS



HOSES - All Chillers come with 2x Hoses, 8 feet in length. Hoses are 1/2" Inner Diameter. Hoses come pre-fit with Gaskets, but customers should always double-check for Gaskets before installing

GASKETS - Chillers come with extra Gaskets for the Hoses:



FILTERS - All Chillers come with extra Filters. First Generation 0.6HP Chillers use 5" Filters (left), and all 0.8HP and 1.0HP Chillers use 10" Filters



ADAPTERS - Chillers come with Adapters. Can be used to add optional Valves to Chiller Inlet & Outlet

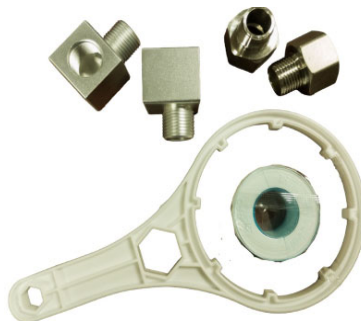


External Strainer - Some Chillers come with External Strainer to "pre-filter" the water. Affixes to Chiller Inlet, catches large particles before entering system

GASKETS - Chillers come with extra Gaskets for the Adapters:



Start-up Accessory Kits - All Chillers will come with variations of Start-up Accessory Kits. Most include spare gaskets, adapters, and tools that may be needed for maintenance, such as a Filter Wrench or Strainer Wrench. Kit contents vary across different models.



Dynamic Cold Therapy Product Guide

ACCESSORIES OVERVIEW

PLUNGE TUB PARTS



Barrel and Cuboid - Latest editions of these models will include an Accessory Kit:

- Rubber Plugs
- Disk Strainers
- Inlet & Outlet Caps
- Drain Adapter Kit
- Quick Connect Hose Kit
- Drain Valve
- Drain Valve Adapter
- Keys for Buckle Cover
- Spare screws for Buckles

*Parts not to scale



Inflatable Cold Plunge – All units include spare parts and accessories:

- Hose Adapters
- Replacement Buckle Patches
- Repair Kit
- Inlet & Outlet Port Caps
- Inlet & Outlet Fitting Caps
- Pump
- Tote Bag

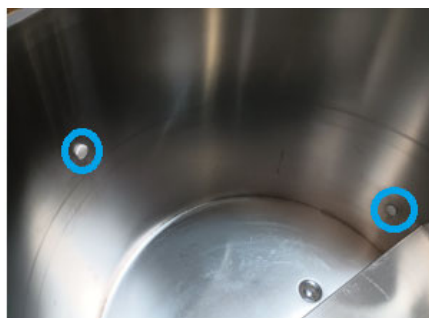
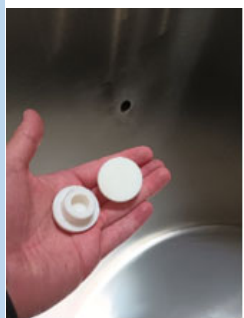
* Parts not to scale



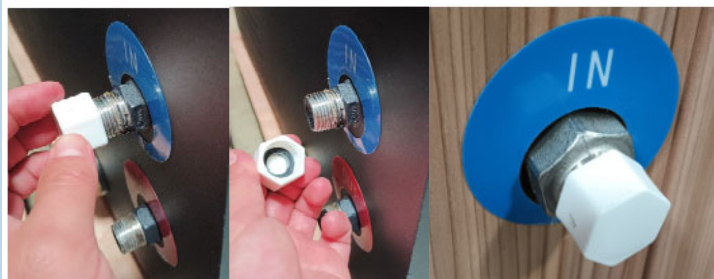
Dynamic Cold Therapy Product Guide

ACCESSORIES OVERVIEW

CAPS AND PLUGS



All Barrel and Cuboid Cold Plunge Tubs come with 2x Rubber Plugs for Inlet and Outlet Ports



All Barrel and Cuboid Cold Plunge Tubs come with 2x Caps for the Inlet and Outlet Fittings



All Barrel and Cuboid Cold Plunge Tubs come with Disc Strainers. These can be installed on the inside of the Outlet Port



All Inflatable Cold Plunge Tubs come with 2x Caps for the Inlet and Outlet Ports



All Inflatable Cold Plunge Tubs come with 2x Caps for the Inlet and Outlet Fittings

Dynamic Cold Therapy Product Guide

ACCESSORIES OVERVIEW

DRAINS, ADAPTERS, ETC.

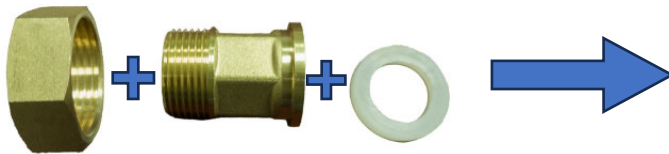
Drain Valve & Drain Valve Adapter



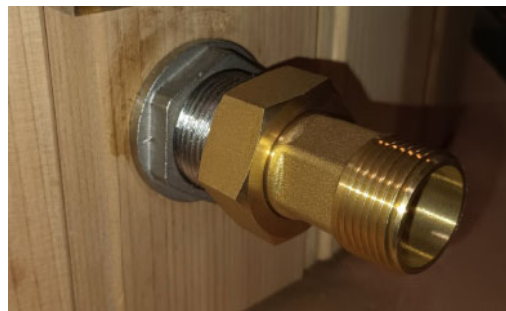
Drain Valve and Drain Valve Adapter can be combined to allow a "shut off valve" on the Drain fitting, and allows a standard garden hose to be connected to the Drain Valve



Drain Adapter Assembly



Drain Adapter Assembly can be installed to allow a standard garden hose to be connected to the Drain



Quick Connect Hose Fittings



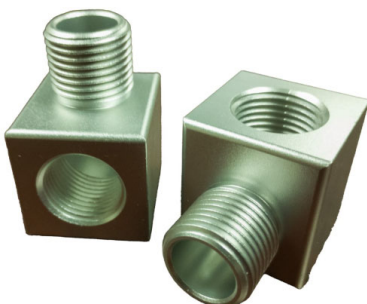
Adapter

Camlock

Quick Connect Hose Fittings allow for fast and easy removal or attachment of the Hoses to the Cold Plunge. The Adapter threads onto the Inlet/Outlet Fittings, and the Camlock threads onto the Hoses. The Camlock then clamps onto the Adapter and can be locked into place with the attached Cotter Pins.



Right-Angle Adapters



Right-Angle Adapters can be used in areas where space may be limited and the user prefers to have the Hoses attached to the Chiller from a 90° angle.



Dynamic Cold Therapy Product Guide

ACCESSORIES OVERVIEW

ADD-ON ACCESSORIES



Hose Sleeves

Insulated Hose Sleeves can be purchased from our website. Helps mitigate condensation that gathers on the Hoses during cooling, and helps insulate Hoses for improved temperature maintenance



Filters

Extra Filters can be purchased from our website. Comparable Filters can also be found through other online retailers. Filter longevity will vary based on use, volume of water, user preferences, water quality, and other factors. Filter may need to be changed every 1-4 weeks.

[10" Filters - 0.8HP & 1.0HP Units](#)

[5" Filters - 0.6HP Units](#)

Deluxe Covers

Barrel Cover



Deluxe 4" Insulated covers can be purchased for the Barrel and Cuboid Cold Plunge models. Insulated covers provide better temperature regulation and maintain temperatures for longer periods. Quality is comparable to covers used for Hot Tubs and similar applications. Comes with locking buckles compatible with keys that come with the Barrel and Cuboid.

Cuboid Cover



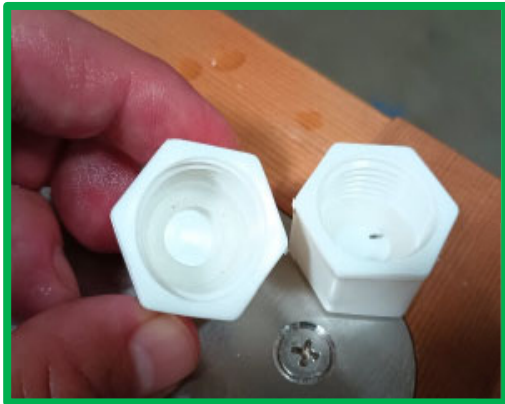
Dynamic Cold Therapy Product Guide

INSTALLATION & SET-UP

PREPARATION

IMPORTANT: After unpacking (or accidental tip-over allow the chiller to stand upright for 20 minutes before starting. The fluid in the compressor needs to settle. Failure to do so could result in irrevocable damage not covered under warranty.

When removing the Caps please be sure that the Gaskets on the inside of the Caps are not left on the Inlet or Outlet Fittings



Please Note: Some Caps come with Gaskets that are clear and may be more difficult to see inside the Cap



Wrap all Chiller and Tub fittings with Plumber's Tape. Wrap in a clock-wise motion 2-3 times around each Fitting. There should be a total of 4 Fittings wrapped before connecting the Hoses.



Double-check that all Hose Fittings have a Gasket installed. Hoses come pre-fit with Gaskets, but they may come loose during transport



If included, attach Pre-Filter External Strainer to the Chiller Inlet.



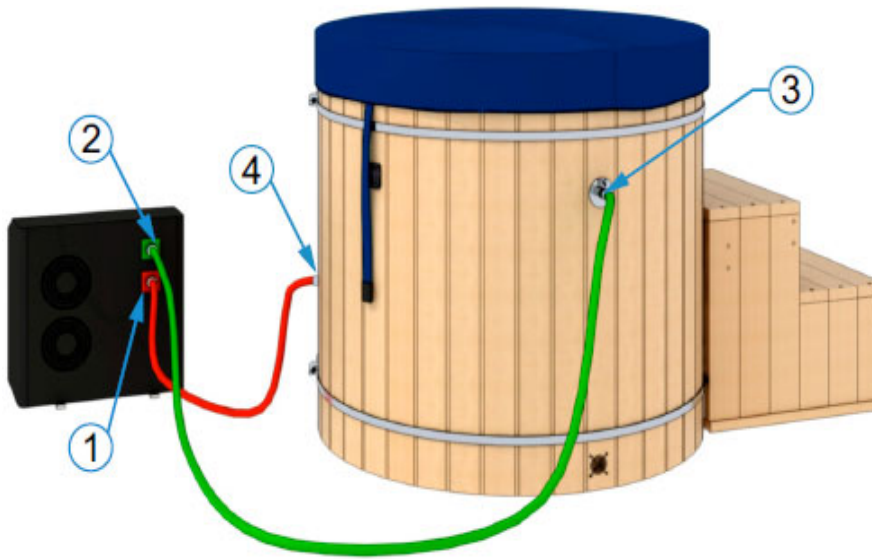
[Video Demonstration Linked HERE](#)



Dynamic Cold Therapy Product Guide

INSTALLATION AND SET-UP

HOSE CONFIGURATION



Barrel Cold Plunge

1 = CHILLER INLET

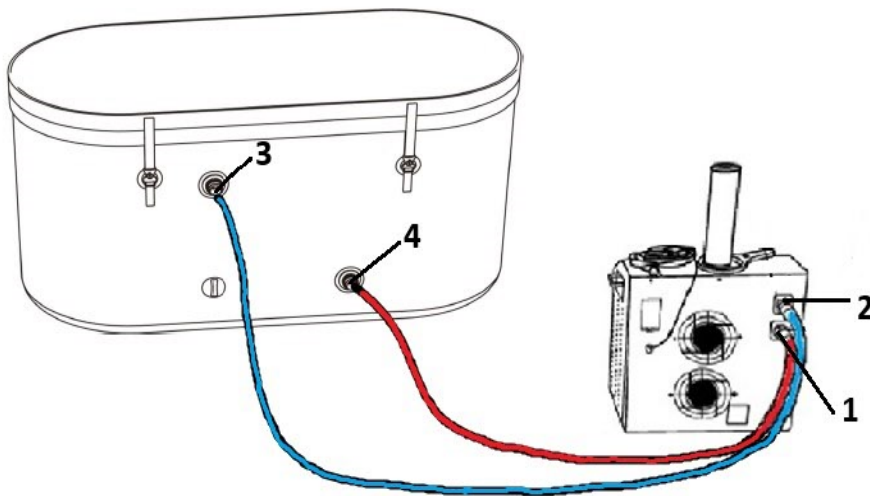
2 = CHILLER OUTLET

3 = TUB INLET

4 = TUB OUTLET



Cuboid Cold Plunge



Inflatable Cold Plunge

1 = CHILLER INLET

2 = CHILLER OUTLET

3 = TUB INLET

4 = TUB OUTLET



DYNAMIC
COLD THERAPY

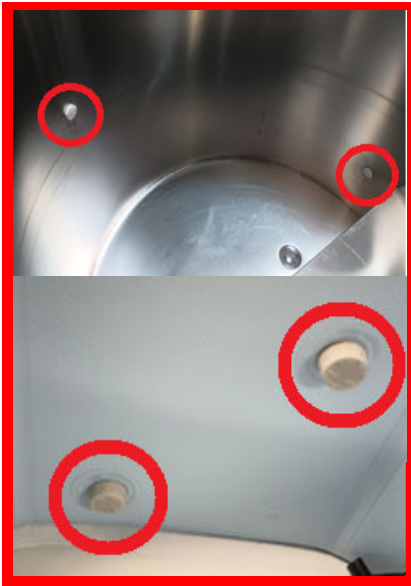
Dynamic Cold Therapy Product Guide

INSTALLATION & SET-UP

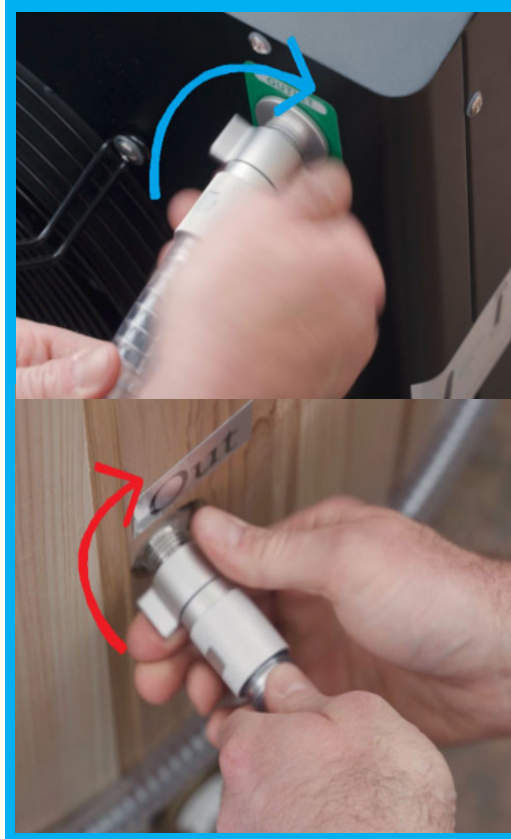
HOSE CONNECTIONS

Please confirm that the hoses are configured correctly for proper water flow. The **Tub Outlet** connects to the **Chiller Inlet**, and the **Tub Inlet** connects to the **Chiller Outlet**.

Hoses connect to the Chiller and the Cold Plunge Tub Fittings by threading clockwise. Although the Hoses need to be fastened securely to prevent air leakage into the system, hand-tight is all that is needed to secure the Hoses.



IMPORTANT:
REMEMBER TO REMOVE PLUGS AND CAPS FROM INTERIOR COLD PLUNGE INLET & OUTLET PORTS BEFORE TURNING ON CHILLER. DAMAGE WILL OCCUR IF THE CHILLER IS RUN WITHOUT WATER FLOW



GENERAL OPERATION

CHILLER OPERATION

Applies to all models of DCT Chillers

- RCD** - Found on the back of the Chiller
- Power** - After plugging in Chiller to power outlet, press the orange "Test" button on the RCD, and then flip blue Power switch
- Note: If Chiller powers off unexpectedly check RCD Power Switch, use Test button, and restart Chiller. If issue persists, first check that the outlet used provides adequate power. If the circuit breaker that the outlet is on is distributing power to too many appliances the Chiller RCD may be "tripping" to protect itself from inadequate power input.



Dynamic Cold Therapy Product Guide

OPERATIONAL DETAILS

BASIC EDITION

Home screen overview



- Adjust temperature setting using Temperature Slider
- Activate system by pressing Power Icon
- Unlock display by holding Lock Icon for 3 seconds

DISPLAY KEY

- WiFi - indicates connection status
- Ozone - indicates Ozone status
- Cooling - indicates Cooling Mode
- Heating - Indicates Heating Mode
- Defrosting - indicates Defrosting Mode
- Ambient Temperature display
- Flow Rate - displays in Liters / minute
- Lock Screen icon
- Settings Menu
- Temperature Setting Slider
- Fault Warning Icon
- Power - illuminated when active

Settings Menu overview



- Auto Power: enables unit to resume set temperature maintenance upon power being restored after an outage
- Toggle Temperature setting to display in Celcius or Farenheit
- Adjust Ozone slider to set how long the Ozone runs. Setting to zero minutes turns off Ozone cycle.

SETTINGS KEY

- Auto Power
- Sound
- Temperature - °C or °F
- Help Menu
- Ozone setting
- Display brightness
- Display sleep setting
- Lock Display setting
- WiFi connectivity
- Return to Home Screen

WiFi only connects over 2.4GHz Network. Smart device must be on a 2.4GHz network at time of connection to enable WiFi functionality

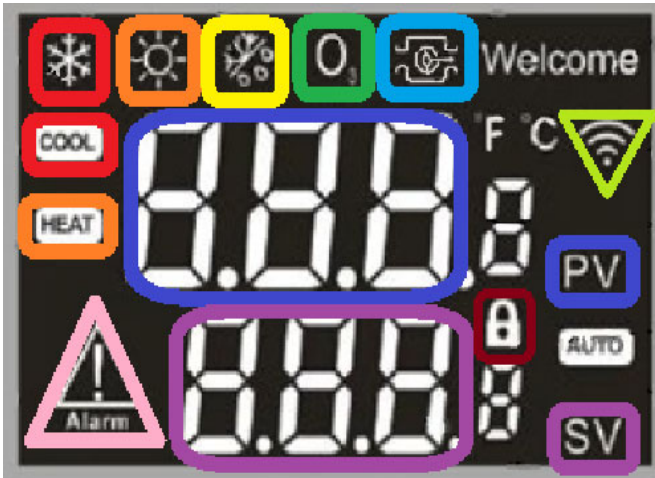


Dynamic Cold Therapy Product Guide

OPERATIONAL DETAILS

STANDARD EDITION

HOMESCREEN OVERVIEW



- Ozone icon flashes when pause or about to start, displays solid when Ozone is active
- WiFi icon blinks rapidly while searching for signal. Blinks slowly while connecting. Displays solid when connected to WiFi

DISPLAY KEY

- Cooling Mode Indicators
- Heating Mode Indicators
- Defrosting mode Indicator
- Ozone Indicator
- Water Pump Indicator
- Current Water Temperature
- Set Water Temperature
- Fault Warning icon
- WiFi Connection Status icon
- Lock Screen icon



CONTROL PANEL OVERVIEW



CONTROL PANEL KEY

- Select Key - confirms & saves setting, Hold for 3 seconds to lock or unlock screen
- Increase - Raise set temperature, move forward in Settings
- Power Button - Start and Stop Cool or Heat cycles
- Decrease - Lower Set temperature, move back in Settings
- Mode Key - switch modes and settings

KEY COMBOS

- + & -** - Turn Ozone on & off
- + & ✓** - Switch between Celsius & Fahrenheit (hold keys for 3 seconds)
- ≡ & -** - Reset WiFi connection (hold keys for 6 seconds)

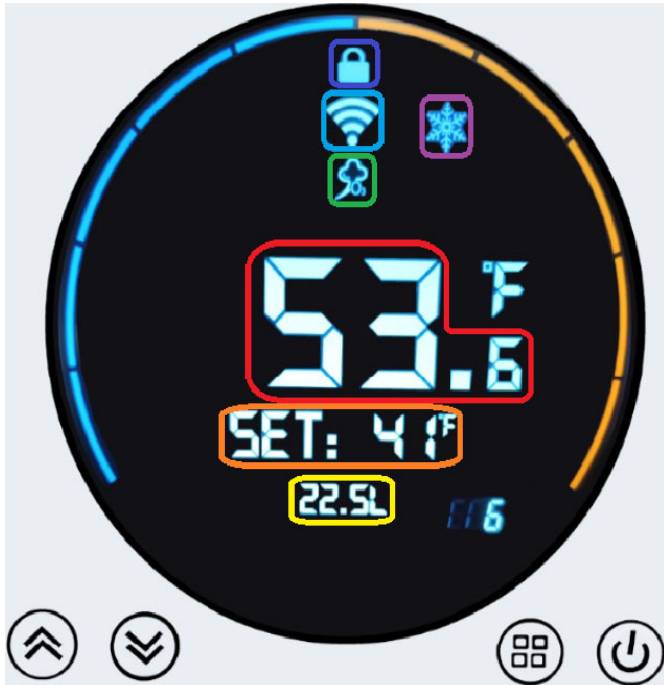
WiFi only connects over 2.4GHz Network. Smart device must be on a 2.4GHz network at time of connection to enable WiFi functionality

Dynamic Cold Therapy Product Guide

OPERATIONAL DETAILS

PREMIER EDITION

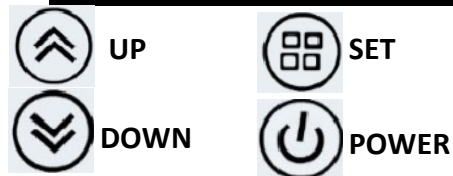
DISPLAY OVERVIEW



DISPLAY KEY

- Current Water Temperature
- Set Temperature
- Flow Rate
- Ozone Indicator
- WiFi Status Indicator
- Lockscreen Indicator
- Cooling Icon

CONTROL PANEL KEY



INTERFACE OVERVIEW

- Set Temperature: Press and hold "SET" key until it flashes. Press "UP" or "DOWN" to set temperature
- Change units: Press and hold "DOWN" key for 10 seconds to change from celsius to fahrenheit
- Screenlock: Press and hold "UP" and "DOWN" keys for 5 seconds to lock or unlock control panel
- WiFi: Press and hold "SET" key until WiFi icon flashes to enter pairing mode

WiFi only connects over 2.4GHz Network. Smart device must be on a 2.4GHz network at time of connection to enable WiFi functionality

